



the QUAD

DALLAS, TEXAS

Developed and Owned by


STREAM
streamrealty.com

LOCATED IN THE HEART OF UPTOWN

At the center of it all, The Quad reestablishes uptown as a thriving epicenter of Dallas retail and restaurants with over one acre of outdoor space, including an urban lawn, and five new retail buildings.

The Quad – Restaurant Collection brings together alfresco dining, restaurants, and coffee creating a neighborhood gathering place for the next generation of Uptown Dallas.

Welcome to The Quad.



A THRIVING COMMUNITY

The Quad is located among the flourishing Uptown Dallas community near various amenities. **The Quad** has a walking score of 92.

20K+
UPTOWN
POPULATION

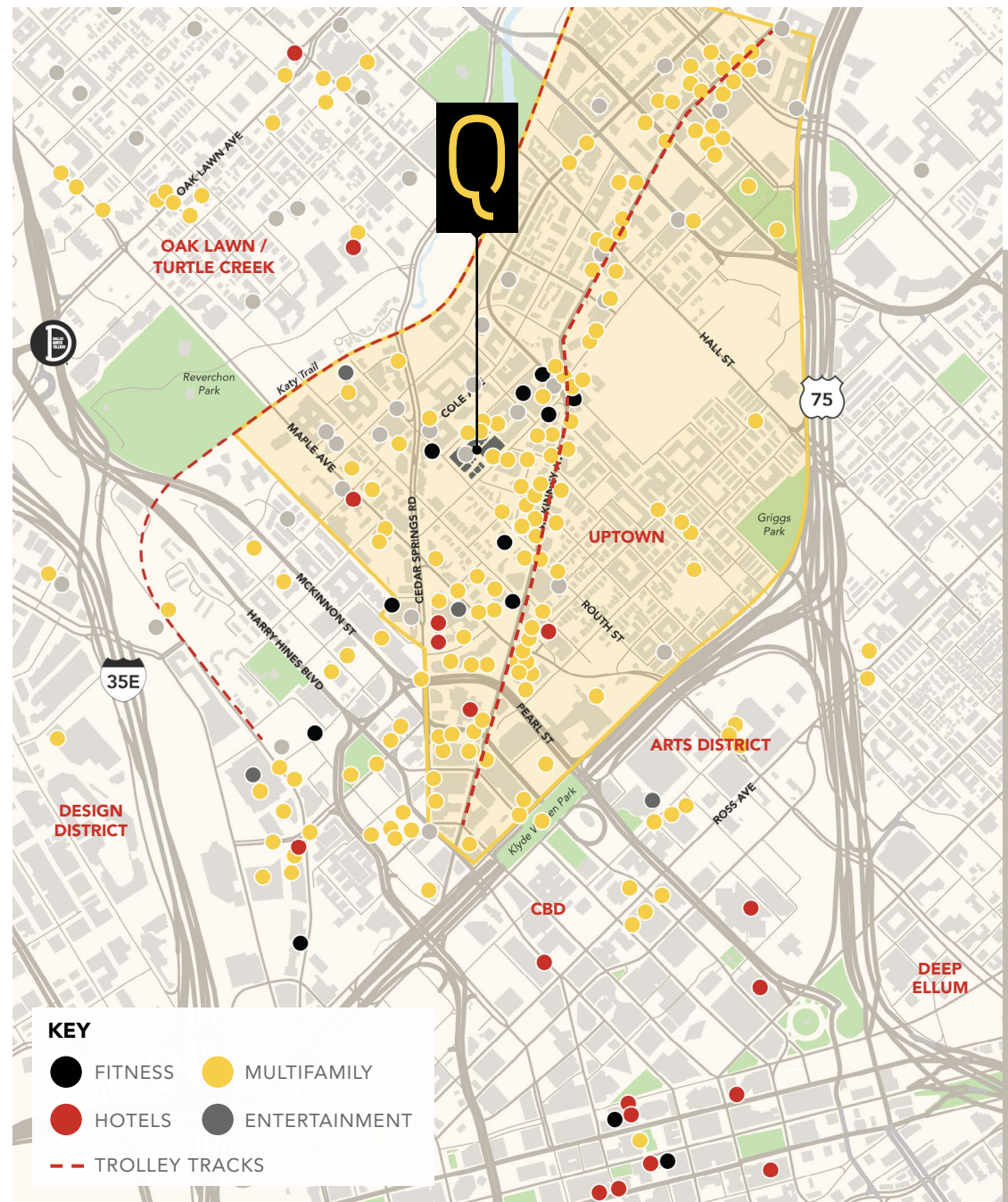
21+
HOTELS

22K+
MULTIFAMILY
UNITS

13,766,412
TOTAL OFFICE SF
in Uptown

\$102,428
HOUSEHOLD INCOME
Avg in 1 Mile Radius

	1 MILE	3 MILES	5 MILES
THE QUAD WORKFORCE	23,195 Workers	97,352 Workers	185,283 Workers
DAYTIME POPULATION	36,272 People	198,773 People	394,278 People



MEET OUR NEIGHBORS



SITE PLAN

Local influences.
Seasonal ingredients.
Interiors with soul.

The Quad Restaurant Collection is set to reinvent Dallas dining with unique taste and high style.

**DELIVERING
2024**



View from
Routh Street

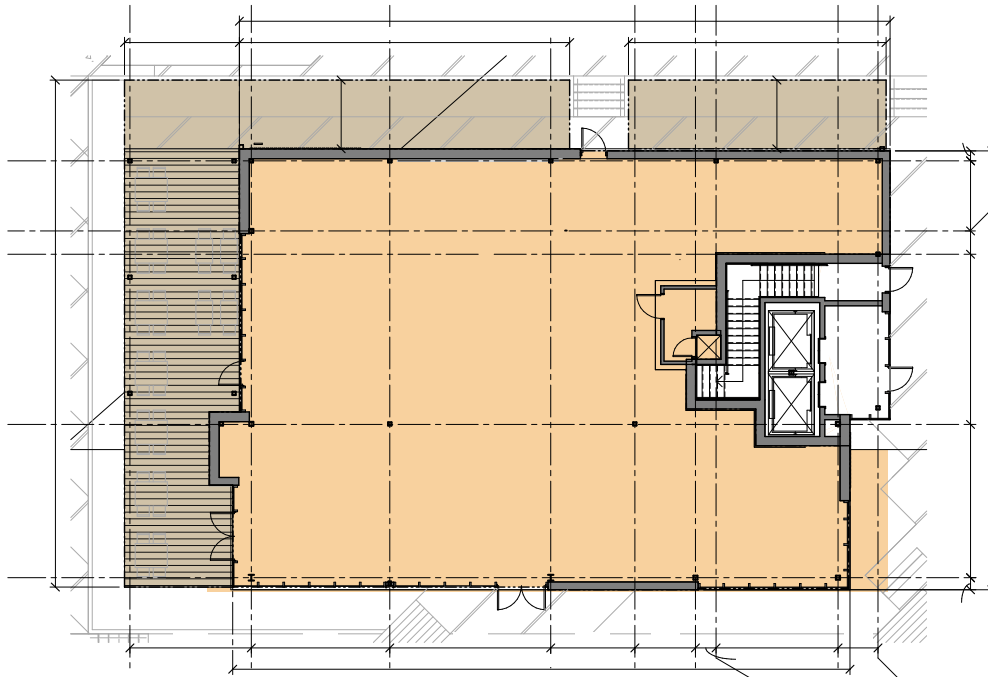


RETAIL 1

INTERIOR GLA: 3,880 SF

PATIO GLA: 1,496 SF

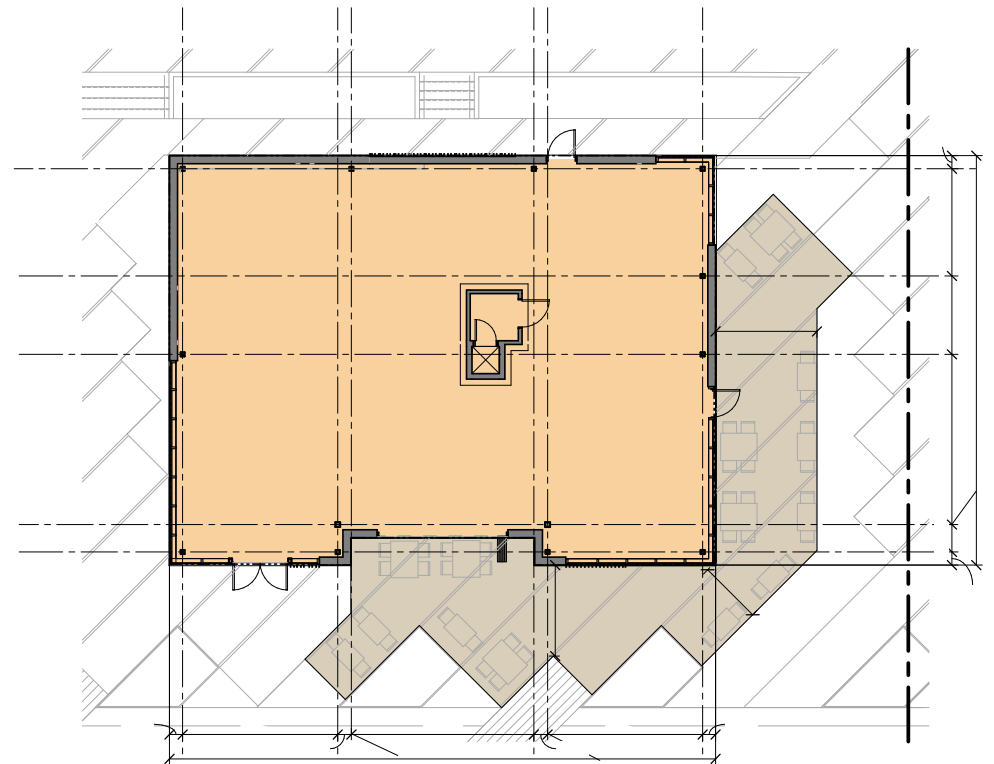
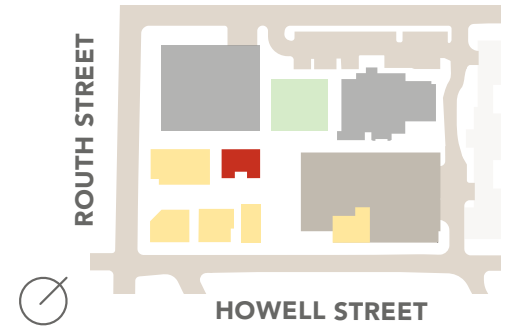
TOTAL GLA: 5,376 SF





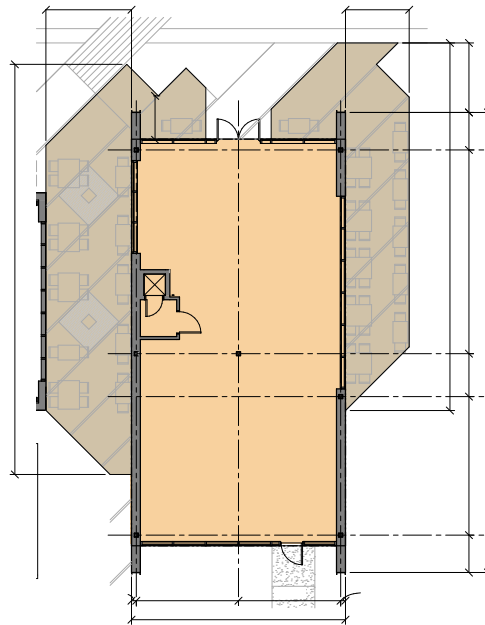
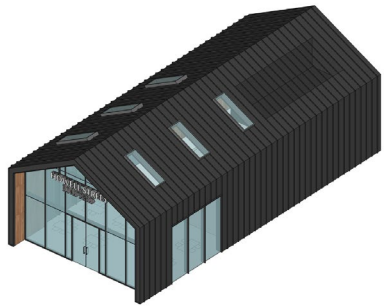
RETAIL 2

INTERIOR GLA: 2,615 SF
 PATIO GLA: 1,000 SF
 TOTAL GLA: 3,615 SF



RETAIL 3

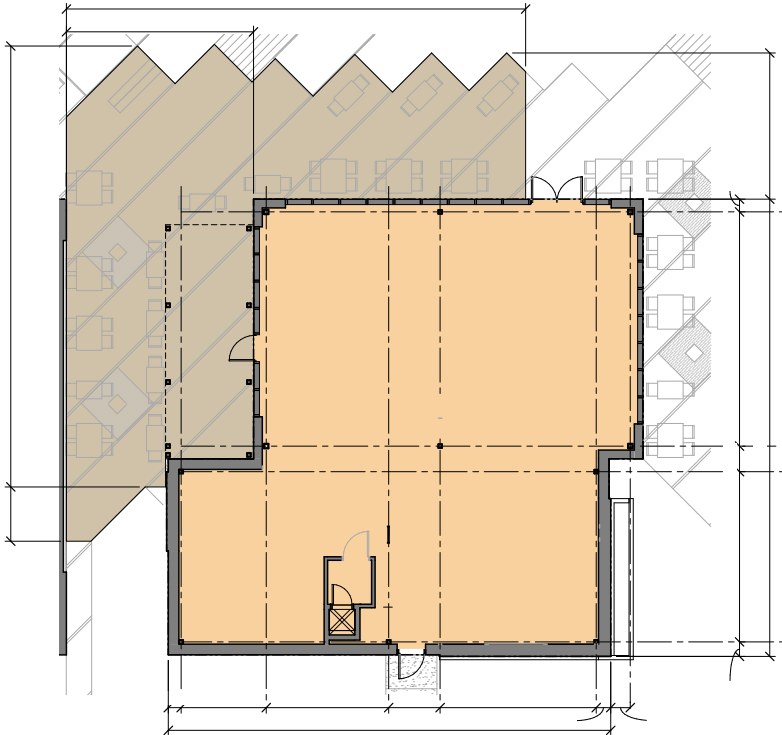
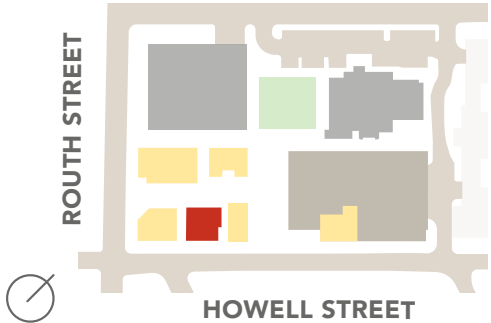
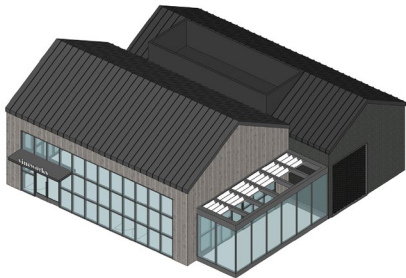
INTERIOR GLA: 1,710 SF
PATIO GLA: 1,160 SF
TOTAL GLA: 2,870 SF





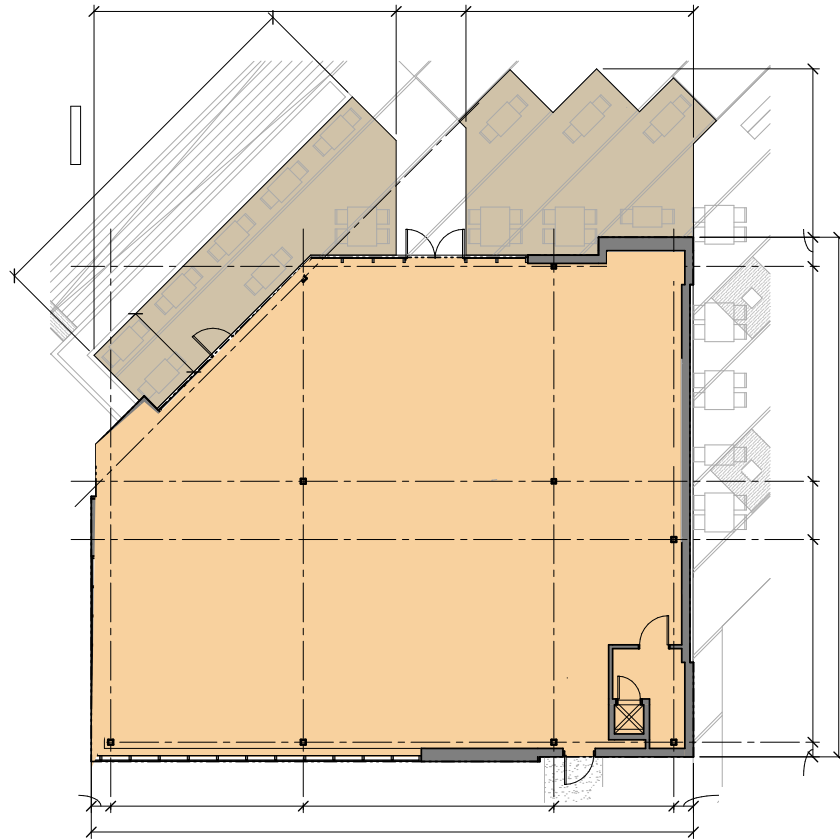
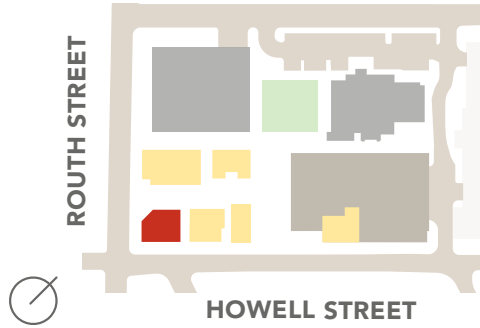
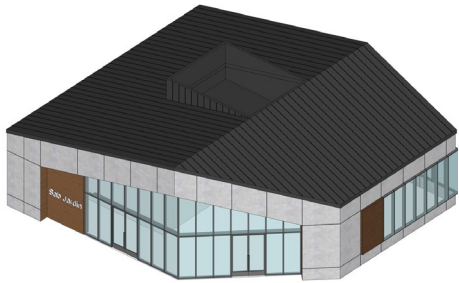
RETAIL 4

INTERIOR GLA: 2,595 SF
PATIO GLA: 1,555 SF
TOTAL GLA: 4,150 SF



RETAIL 5

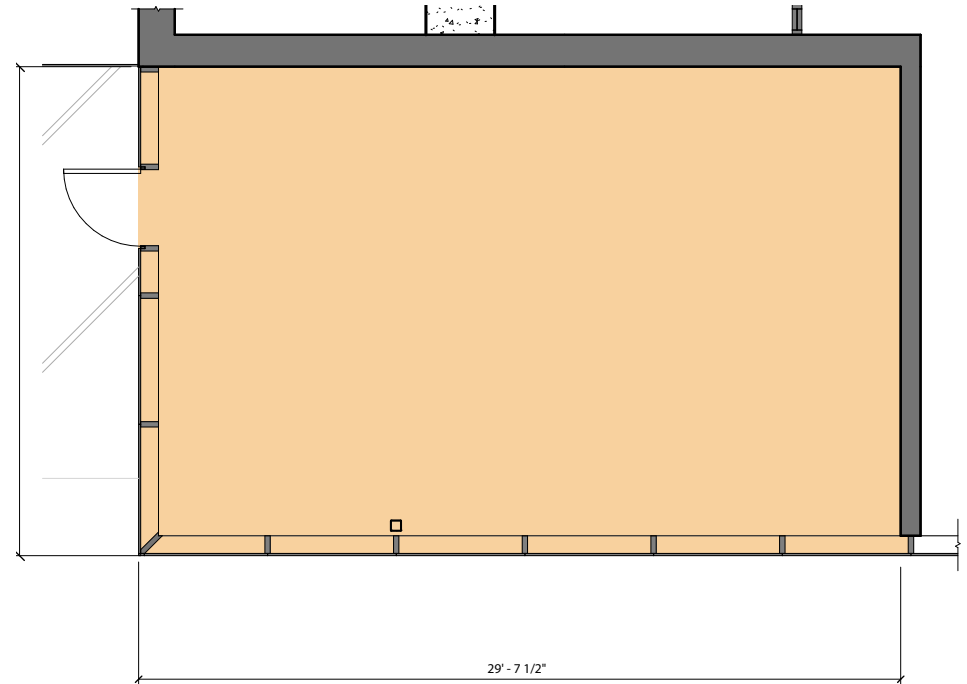
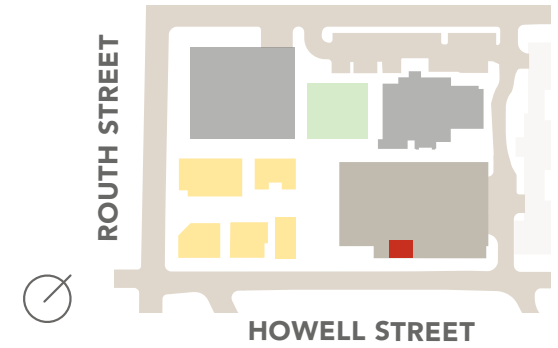
INTERIOR GLA: 2,980 SF
PATIO GLA: 735 SF
TOTAL GLA: 3,715 SF





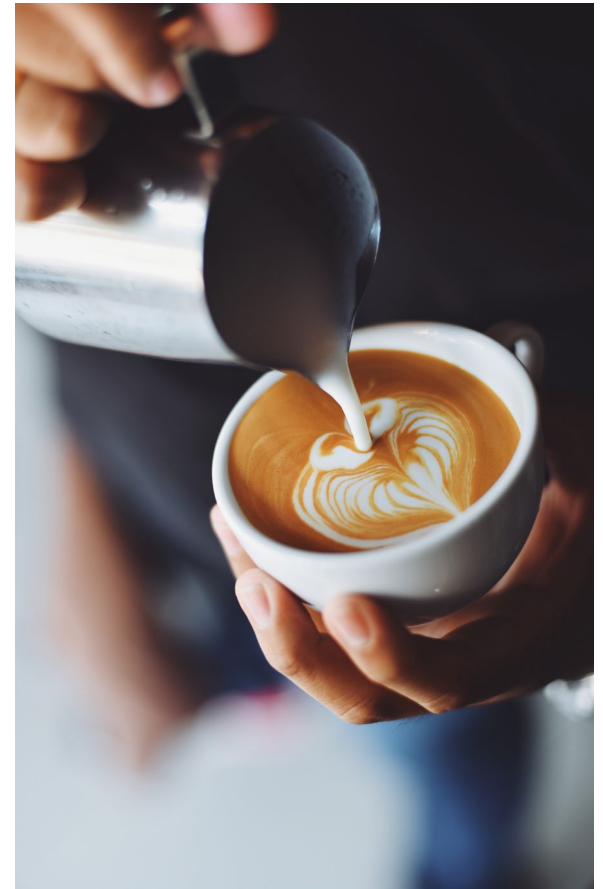
RETAIL 6

THE QUAD
FIRST FLOOR
559 GSF





BE PART OF THE UPTOWN EXPERIENCE



2800 Routh Street & 2699 Howell Street
www.TheQuadUptown.com

For more retail information, please contact **RUE** at **214.651.6000**.

JEREMY ZIDELL

jz@RUE-re.com

AMANDA AARON

amanda@RUE-re.com

MICHAEL NAGY

michael@RUE-re.com



www.RUE-re.com

For more office information, please contact **STREAM** at **214.267.0400**.

RYAN EVANICH

revanich@streamrealty.com
214.267.0442

MARISSA PARKIN

marissa.parkin@streamrealty.com
214.560.2435

RAMSEY MARCH

rmarch@streamrealty.com
214.267.0447

